



THE RITZ - CARLTON  
YACHT COLLECTION

# INTRODUCING THE YACHT EXPERIENCE

DECEMBER 2022



# INTRODUCING EVRIMA

## NOW SAILING!

- The highly anticipated debut of The Ritz-Carlton Yacht Collection has arrived; *Evrima* set sail for its maiden voyage from Barcelona on October 15<sup>th</sup>.
- Named for the Greek word meaning Discovery, *Evrima* inspires travelers to immerse themselves in exceptional experiences, explore new destinations and foster the spirit of adventure.
- Guests are primarily new-to-cruise, around 40-50 years in age.
- Reservations are open for the Caribbean and Mediterranean seasons through 2024. The yachts are also available for private charter for 2024 and beyond.



# EV RIMA BY THE NUMBERS



624  
FEET  
(190 METERS)

25,400  
TONS

149  
SUITES

298  
GUESTS

246  
CREW

1 to 1.21  
CREW-TO-GUEST  
RATIO

1 to 85.2  
GUEST-TO-SPACE  
RATIO

# BRAND VALUE



THE RITZ-CARLTON

The Ritz-Carlton inspires life's most meaningful journeys.

- AWARD-WINNING LUXURY HOTEL BRAND
- STRONG BRAND RECOGNITION GLOBALLY
- HOSPITALITY AT A GOLD STANDARD
- LEGENDARY PERSONALIZED SERVICE

# SERVICE



## SERVICE AT A GOLD STANDARD

Legendary service is provided by the Ladies and Gentlemen of The Ritz-Carlton, with almost one crew member for every guest.

- WARM
- SINCERE
- PERSONALIZED
- ANTICIPATORY

# THE EXPERIENCE

Designed to combine the luxury lifestyle of The Ritz-Carlton with the casual freedom of a yachting vacation, The Ritz-Carlton Yacht Collection will offer itineraries at a relaxed pace and introduce guests to the local cultures of each destination through curated immersive experiences ashore.

ALL-INCLUSIVE VALUE

PERSONALIZED SERVICE OF  
THE RITZ-CARLTON®

MULTIPLE DINING  
EXPERIENCES, 24-HOUR IN-  
SUITE DINING, PLUS  
SPECIALTY DINING

ALL-SUITE  
ACCOMMODATIONS, EACH  
WITH PRIVATE TERRACE

UNIQUE MARINA-STYLE  
PLATFORM, DIRECT ACCESS  
TO WATER

VARIETY OF SOCIAL SPACES  
FOR RECEPTIONS &  
ENTERTAINMENT

RELAXED YACHTING PACE,  
OVERNIGHTS & DAYTIME  
PORTS OF CALL

CURATED, IMMERSIVE  
DESTINATION EXPERIENCES  
ASHORE

# THE ALL-INCLUSIVE EXPERIENCE



- LUXURY ALL-SUITE ACCOMMODATIONS, EACH WITH PRIVATE TERRACE
- ACCESS TO A PERSONAL CONCIERGE
- MULTIPLE DINING EXPERIENCES, INCLUDING 24-HOUR IN-SUITE DINING
- MARINA PLATFORM WITH ACCESS TO NON-MOTORIZED WATER SPORTS WHILE AT ANCHOR
- BEVERAGES IN-SUITE AND THROUGHOUT THE YACHT
- ONBOARD ACTIVITIES AND ENTERTAINMENT
- ONBOARD GRATUITIES
- WI-FI THROUGHOUT THE YACHT

# THE DINING EXPERIENCE

MISTRAL  
MEDITERRANEAN INSPIRED  
DECK 8







THE EVRIMA ROOM  
LOCALLY INSPIRED  
DECK 4











THE MARINA TERRACE  
COCKTAILS AND LIGHT BITES  
DECK 3



S.E.A.  
SPECIALTY DINING  
DECK 6



24-HOUR IN-SUITE DINING



# EVIRIMA DINING EXPERIENCES

INCLUDED

OPEN SEATING

MISTRAL

TALAAAT NAM

THE POOL HOUSE

THE EVRIMA ROOM

*\*Reservations encouraged once on board*



LIGHT BITES

THE BAR

THE LIVING ROOM

THE MARINA TERRACE

24-HOUR IN-SUITE DINING



ADDITIONAL FEE

SPECIALTY\*

S.E.A.

DINING PRIVÉE

*\*Reservations required*



# SAMPLE MENU ITEMS



# THE SUITE EXPERIENCE

# EVIRIMA'S SUITES

- 149 SUITES, EACH WITH PRIVATE OCEAN-VIEW TERRACE
- HIGHEST PERCENTAGE OF LARGER SUITES IN LUXURY CRUISING
- TWO OWNER'S SUITES, EACH WITH PRIVATE WHIRLPOOL
- LOFTS AND COMBINABLE SUITES WITH FLEXIBLE CONFIGURATION
- SUPERIOR GUEST AMENITIES



# SUITES AT A GLANCE

THE OWNER'S SUITE



SUITE: 1091 SQ FT | 101 SQ M  
TERRACE: 635 SQ FT | 59 SQ M  
QUANTITY: 2

THE VIEW SUITE



SUITE: UP TO 574 SQ FT | 53 SQ M  
TERRACE: UP TO 129 SQ FT | 12 SQ M  
QUANTITY: 4

THE TWO-STORY LOFT SUITE



SUITE: 611 SQ FT | 57 SQ M  
TERRACE: 81 SQ FT | 7.5 SQ M  
QUANTITY: 12

THE GRAND SUITE



SUITE: 587 SQ FT | 55 SQ M  
TERRACE: UP TO 118 SQ FT | 11 SQ M  
QUANTITY: 14

THE SIGNATURE SUITE



SUITE: 429 SQ FT | 40 SQ M  
TERRACE: UP TO 118 SQ FT | 11 SQ M  
QUANTITY: 27

THE TERRACE SUITE



SUITE: 300 SQ FT | 28 SQ M  
TERRACE: UP TO 81 SQ FT | 7.5 SQ M  
QUANTITY: 90

# SUITE AMENITIES AND FEATURES

Wake up every morning relaxed and carefree in one of our 149 expertly appointed suites. Designed to combine the modern elegance of The Ritz-Carlton with the casual luxury of the world's most magnificent super yachts, our suites set a new standard for luxury travel.

PRIVATE OCEAN-VIEW  
TERRACE

DOUBLE VANITY  
BATHROOMS

ESPRESSO MACHINE  
WITH COMPLIMENTARY  
COFFEES AND TEAS

24-HOUR IN-SUITE  
DINING

COMPLIMENTARY WI-FI

LUXURIOUS CUSTOM  
KING BED SYSTEM AND  
LINENS

MINI-BAR PROVISIONED  
TO GUESTS'  
PREFERENCES

COMPLIMENTARY  
BOTTLE OF CHAMPAGNE  
UPON ARRIVAL

INDIVIDUAL ROBE AND  
SLIPPERS

ACCESS TO A PERSONAL  
CONCIERGE IN ALL SUITE  
CATEGORIES

# PERSONAL CONCIERGE



All suites include access to a Personal Concierge, standing by to ensure every detail of the voyage is considered, from dinner reservations at our specialty restaurant to organizing destination experiences. The Personal Concierge is the onboard touchpoint to ensure a seamless journey from start to finish.

The Personal Concierge will be the ultimate insider on board for guests, providing recommendations and insight, tailoring their voyage specifically to them.

# THE OWNER'S SUITE

QUANTITY: 2  
SUITE: 1091 SQ FT | 101 SQ M  
TERRACE: 635 SQ FT | 59 SQ M



# THE VIEW SUITE

QUANTITY: 4  
SUITE: UP TO 574 SQ FT | 53 SQ M  
TERRACE: UP TO 129 SQ FT | 12 SQ M



# THE TWO-STORY LOFT SUITE

QUANTITY: 12  
SUITE: 611 SQ FT | 57 SQ M  
TERRACE: 81 SQ FT | 7.5 SQ M



# THE GRAND SUITE

QUANTITY: 14  
SUITE: 587 SQ FT | 55 SQ M  
TERRACE 108-118 SQ FT | 10-11 SQ M



# THE SIGNATURE SUITE

QUANTITY: 27  
SUITE: 429 SQ FT | 40 SQ M  
TERRACE: 81-118 SQ FT | 7.5-11 SQ M



# THE TERRACE SUITE

QUANTITY: 90  
SUITE: 300 SQ FT | 28 SQ M  
TERRACE: 54-81 SQ FT | 5-7.5 SQ M



# CONNECTING AND CONVERTIBLE SUITES

All suites are designed for two (2) guests, but many can be connected to satisfy the needs of families or to appeal to meeting planners. An innovative system offers the flexibility to transform connecting suites into larger spaces by removing a panel of the wall.

All connecting suites include:

- An expanded private terrace
- Two (2) luxury custom king bed sleep systems
- Two (2) in-suite safes
- Two (2) double vanity bathrooms, each with a modern shower system
- Three (3) digital flat screen televisions
  - Two (2) in Terrace-to-Terrace configurations

Terrace-to-Grand (connected)



Terrace-to-Signature (convertible)



Terrace-to-Terrace (convertible)



# CONNECTING AND CONVERTIBLE SUITES

## INNOVATIVE WALL SYSTEM

Flexible configuration options allow connecting suites to expand to satisfy the needs of families to appeal to meeting planners seeking to provide similar accommodations for their top performers.

The opening measures 7.2 feet wide by 7.2 feet high (2.2 meters wide by 2.2 meters high).

## CONNECTING SUITES

Of the 149 suites on board, the connecting suites total 43 single-suite configurations. If all connecting suites are utilized as single-suite configurations, inventory reduces to 106 suites.

Select Terrace Suites (18 total) are convertible suites that can be configured as an extended living and dining area or remain a second bedroom when connected to the adjacent suite.

Three (3) combinations of suite categories are available for connecting suites:

Terrace-to-Terrace: 24 total (12 Convertible)

Terrace-to-Signature: 7 total (Three (3) Convertible)

Terrace-to-Grand: 12 total (Three (3) Convertible)

# CONNECTING TERRACE SUITES

SUITE: 600 SQ FT | 56 SQ M  
TERRACE: UP TO 162 SQ FT | 15 SQ M



# THE MARINA

MULTI-FUNCTIONAL PLATFORM

DIRECT ACCESS TO THE WATER FROM DECK 3

COMPLIMENTARY WATERSPORTS DURING  
PORT DAYS WHILE AT ANCHOR\*

- PADDLEBOARDS
- WINDSURF BOARDS
- KAYAKS
- SAILBOATS
- SNORKELING ACCESSORIES

*\*Weather and local authorities permitting*



# THE MARINA ACTIVITIES



90-minute private or semi-private lessons in sailing or windsurfing\*

\*available at an additional cost



Aquatic fitness classes:

Land and Sea: Strength and stability using standup paddle boards, stability balls, bans and kettlebells

Paddleboard Fitness: Core conditioning and body weight exercises

Stretching at Sea



Orientations for water sports equipment:

Sailing 101

Kayaking 101

Snorkeling 101 (where available)

Paddleboarding 101



# PUBLIC SPACES ON BOARD EVRIMA



- INTIMATE, RELAXED, CASUALLY ELEGANT ATMOSPHERE
- INTUITIVE, RESIDENTIAL FEEL
- LOUNGE AND BAR OFFER A VARIETY OF ENTERTAINMENT EXPERIENCES
- ACTIVELY SOCIALIZE OR ENJOY PRIVACY
- PEACEFUL RETREAT BY DAY, SOCIAL SCENE BY NIGHT













# THE HUMIDOR

- Partnership with Davidoff to offer a wide assortment of world-class cigars including
  - Aniversario Series
  - Signature Series
  - Escurio Series
  - Winston Churchill Series
  - Oro Blanco Series
- Cocktails and spirits to pair with cigars, with Premium Reserve offerings available for an additional cost, including
  - Pappy Van Winkle
  - Rémy Martin Louis XII
  - Johnny Walker Blue Label
- History of Cigars educational event provides a sneak peak into the world of cigar making



# SPA & WELLNESS

THE RITZ-CARLTON SPA® AND  
FITNESS CENTER

# SPA AND WELLNESS

- SPA DESIGNED AND OPERATED BY THE RITZ-CARLTON®
- INDOOR AND OUTDOOR TREATMENT ROOMS AND RELAXATION AREAS
- BEAUTY LOUNGE AND GENTLEMEN'S GROOMING SALON
- TECHNOGYM EQUIPMENT
- GROUP EXERCISE CLASSES
- PERSONAL TRAINING
- FITNESS ON DEMAND



# THE RITZ-CARLTON SPA OFFERINGS

Guests can escape to their own personal oasis at The Ritz-Carlton Spa to indulge in the scents and delights from around the world while enjoying a relaxing massage or a nourishing facial featuring products from 111SKIN and ESPA

- Massages
- Facials (for both ladies and gentlemen)
- Skin Treatments
- Salon Services
- Barber Services



**THE RITZ-CARLTON  
YACHT COLLECTION**

An indulgence in a sensory, a treatment of unparalleled softness, an awakening of an essence that has transcended regular boundaries, offered for your peace. The Spa experience aboard The Ritz-Carlton Yacht Collection makes you to indulge in luxury and delight from around the world, inspired by the destinations we visit and carried to life your senses, our treatments soothe and restore, refresh the body and renew the spirit. Alike only, this is where you drift away in the relaxation aboard your yacht at sea.

SPA

# SPA TREATMENTS



60- or 90-minute calming or deep-muscle massage, featuring a selection of aromatherapy oils, hot stones and enhancements designed by ESPA and 111SKIN.



Skin-nourishing treatments, including leg masques, exfoliating body scrubs and facials to hydrate and reinvigorate



Manicure and pedicure services performed with 111SKIN products paired with face masks to leave the skin and cuticles smooth and nourished



Salon services for men and women, including a clean shave or a hair cut and style

# FITNESS STUDIO OFFERINGS

In addition to the spa, the onboard Fitness Studio is home to a health and wellness program integrating fitness and spa with lectures and nutrition that can be customized to fit guests' needs.

## FITNESS STUDIO OFFERINGS:

- Personal Training
- Group Exercise Classes
- Private or Group Yoga Classes
- Fitness on Demand Access



















# RITZ KIDS

- DEDICATED SPACE ON BOARD FOR CHILDREN AGES 4 TO 12
- ENHANCED SERVICES AVAILABLE DURING HOLIDAYS AND SUMMER MONTHS

MORNING SESSION: 9:00AM – 12:00PM \$45

AFTERNOON SESSION: 1:00PM – 4:00PM \$45

EVENING SESSION: 6:00PM – 9:00PM \$65



# RITZ KIDS PROGRAMMING



The Ritz Kids program is geared toward children from ages 4 to 12. Four key pillars are designed to inspire natural curiosity and creativity and to engage their senses.

**OCEANS & MARINE LIFE:** Examining our relationship with water and marine life while enlivening a natural curiosity into the underwater world of sea creatures

Sample activities: Water Cycle Craft, Create a Creature

**DESTINATIONS AND THEIR CULTURES:** Celebrating the cultures from around the world through art, music, theatre and play

Sample activities: Culture and Clay, Mystery Detective

**OCEAN STEWARDSHIP AND SAILING:** Shining a light on traditional and modern sailing practices including navigation, marine communication and ship stability

Sample activities: Destination Navigation Chart, Ropes and Knots

**ENVIRONMENTAL RESPONSIBILITY:** Promoting our role in the health of our planet for the future including sustainability, resource consumption and protecting our ecosystem

Sample activities: Water Sampling Science Experiment, Yacht Sustainability Systems

# ENTERTAINMENT AND ENRICHMENT



Led by the Entertainment & Enrichment Director, onboard entertainment staff features an in-house quartet comprised of one pianist, one vocalist, one guitarist and one drum/sax musician.



A global network of world-renowned entertainers and enrichment artists joins the yacht for specific sailings to suit the regions we visit.

Our detailed activities program features elements such as classic movies, themed dinners with curated entertainment and lectures.



A partnership with Enterprise & Art creates an immersive art program and curate a permanent collection of art showcased throughout the yacht.

Limited print editions and unique are available for purchase.



The onboard Arts Concierge will oversee the Art Program experience and provide regular educational talks on art history, curation and the stories behind each piece.

# SPECIAL OCCASION PACKAGES

## **WEDDINGS AND VOW RENEWALS** - \$900 PER COUPLE / \$450 PER GUEST

Our Wedding and Vow Renewal package allows guests to celebrate their special day with loved ones while onboard, with a ceremony officiated by the captain\* and pre- and post- ceremony reception and toast.

This package includes lunch or dinner at our Michelin-inspired specialty restaurant or in our Dining Privéé, bouquets and boutonnieres for the bridal party, live music and a personalized cake.

## **CELEBRATIONS** - \$950 PER COUPLE

Couples traveling with us who are celebrating a special occasion such as an anniversary or honeymoon may purchase our Celebrations package which includes a bottle of champagne, special turndown amenities, a couple's massage at the onboard spa, and their choice of Epicurean Experience from The Shore Collection.

Packages can be booked 134 days prior to sailing.

For more information, please email [special.services@ritz-carltonyachtcollection.com](mailto:special.services@ritz-carltonyachtcollection.com)

\*The Ritz-Carlton Yacht Collection does not perform legally binding ceremonies on board.  
It is recommended for couples to hold a civil ceremony to ensure they meet local marriage law requirements.



# ITINERARIES

# RELAXED PACE



- MORE OVERNIGHTS IN PORTS OF CALL
- MOST VOYAGES RANGE 7-10 NIGHTS
- ABILITY TO COMBINE BACK-TO-BACK VOYAGES WITHOUT REPEATING PORTS
- INTIMATE SIZE ALLOWS ACCESS TO COVETED YACHTING DESTINATIONS

# THE SHORE COLLECTION

## EXPERIENCES ASHORE

Five themed categories

Iconic sights - Active Explorations

Epicurean Experiences - Stirring the Senses

Cultural Connections

Concierge ashore for custom arrangements or private excursions



Yoga on a private beach in Grenada

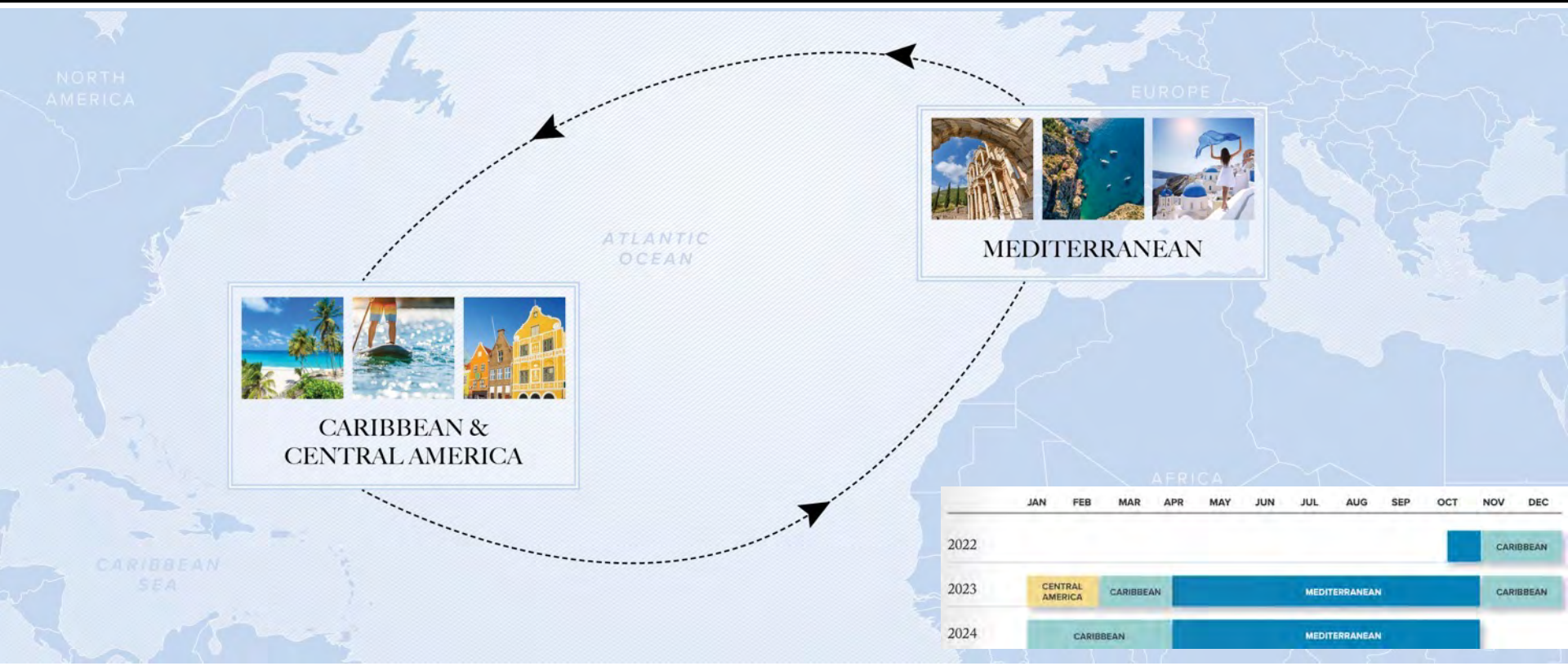
Tour the ruins of Ephesus

Zipline over the Costa Rican Rainforest

Hunt for truffles in Tuscany

DJ Workshop in Ibiza

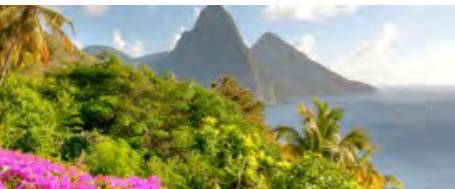
# 2022-2024 SEASONS



# 2022 VOYAGE CALENDAR

## 2022 SEASON HIGHLIGHTS

CARIBBEAN ISLANDS | GREEK ISLES | WINDWARD ISLANDS



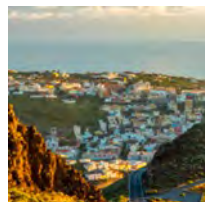
### CARIBBEAN

DATE	NIGHTS	ITINERARY
NOV 17	5	BARBADOS TO BARBADOS
NOV 22	5	BARBADOS TO ST. MAARTEN
NOV 27	7	ST. MAARTEN TO BARBADOS
DEC 4	7	BARBADOS TO ST. MAARTEN
DEC 11	7	ST. MAARTEN TO SAN JUAN
DEC 18	10	SAN JUAN TO SAN JUAN
DEC 28	7	SAN JUAN TO BARBADOS

# 2023 VOYAGE CALENDAR

## CENTRAL AMERICA

DATE	NIGHTS	ITINERARY
JAN 4	10	BARBADOS TO PANAMA CITY
JAN 14	7	PANAMA CITY TO SAN JOSÉ
JAN 21	7	SAN JOSÉ TO SAN JOSÉ



## CARIBBEAN

DATE	NIGHTS	ITINERARY
FEB 9	5	FORT LAUDERDALE TO FORT LAUDERDALE
FEB 14	7	FORT LAUDERDALE TO FORT LAUDERDALE
FEB 21	7	FORT LAUDERDALE TO FORT LAUDERDALE
FEB 28	5	FORT LAUDERDALE TO FORT LAUDERDALE
MAR 5	7	FORT LAUDERDALE TO SAN JUAN
MAR 12	7	SAN JUAN TO BARBADOS
MAR 19	7	BARBADOS TO BARBADOS
MAR 26	7	BARBADOS TO SAN JUAN
APR 2	5	SAN JUAN TO SAN JUAN
APR 7	7	SAN JUAN TO SAN JUAN
APR 14	13	SAN JUAN TO LISBON
NOV 19	7	BARBADOS TO BARBADOS
NOV 26	7	BARBADOS TO ARUBA
DEC 3	10	ARUBA TO FORT LAUDERDALE
DEC 13	7	FORT LAUDERDALE TO FORT LAUDERDALE
DEC 20	7	FORT LAUDERDALE TO FORT LAUDERDALE
DEC 27	7	FORT LAUDERDALE TO SAN JUAN

## MEDITERRANEAN

DATE	NIGHTS	ITINERARY
APR 27	10	LISBON TO BARCELONA
MAY 7	10	BARCELONA TO ROME
MAY 17	7	ROME TO MARSEILLE
MAY 24	7	MARSEILLE TO ROME
MAY 31	10	ROME TO VENICE
JUN 10	9	VENICE TO ATHENS
JUN 19	5	ATHENS TO ATHENS
JUN 24	7	ATHENS TO VALLETTA
JUL 1	7	VALLETTA TO ROME
JUL 8	7	ROME TO NICE
JUL 15	7	NICE TO BARCELONA
JUL 22	11	BARCELONA TO ROME
AUG 2	10	ROME TO VENICE
AUG 12	7	VENICE TO ROME
AUG 24	9	VALLETTA TO ATHENS

SEP 2	7	ATHENS TO ATHENS
SEP 9	7	ATHENS TO ISTANBUL
SEP 16	11	ISTANBUL TO ATHENS
SEP 27	7	ATHENS TO ATHENS
OCT 4	11	ATHENS TO ROME
OCT 15	7	ROME TO BARCELONA
OCT 22	9	BARCELONA TO TENERIFE
OCT 31	7	TENERIFE TO TENERIFE
NOV 7	12	TENERIFE TO BARBADOS

# 2024 VOYAGE CALENDAR

## 2024 HIGHLIGHTS

CARIBBEAN ISLANDS

WINDWARD ISLANDS

JAMAICA

BERMUDA

AZORES

BALEARIC ISLANDS

GREEK ISLES

FRENCH RIVIERA

ITALIAN RIVIERA

## CARIBBEAN

DATE	NIGHTS	ITINERARY
JAN 3	7	SAN JUAN TO BARBADOS
JAN 10	7	BARBADOS TO BARBADOS
JAN 17	7	BARBADOS TO BARBADOS
FEB 9	8	SAN JUAN TO SAN JUAN
FEB 17	7	SAN JUAN TO BARBADOS
FEB 24	7	BARBADOS TO BARBADOS
MAR 2	7	BARBADOS TO ARUBA
MAR 9	7	ARUBA TO SAN JUAN
MAR 16	7	SAN JUAN TO SAN JUAN
MAR 28	7	SAN JUAN TO BERMUDA
APR 4	11	BERMUDA TO LISBON

## MEDITERRANEAN

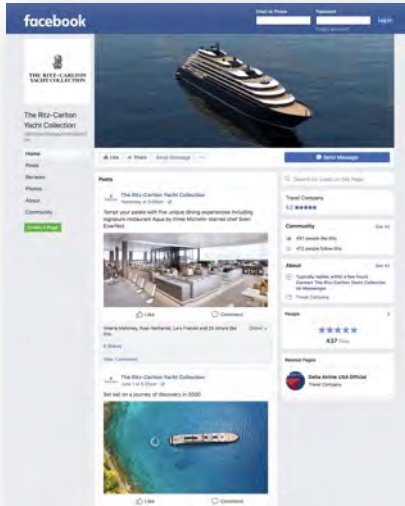
DATE	NIGHTS	ITINERARY
APR 15	11	LISBON TO BARCELONA
APR 26	11	BARCELONA TO ROME
MAY 7	10	ROME TO VALLETTA
MAY 28	7	ROME TO ROME
JUNE 9	10	VALLETTA TO ATHENS
JUN 19	11	ATHENS TO VENICE
JUN 30	7	VENICE TO VENICE
JUL 7	7	VENICE TO ATHENS
JUL 14	7	ATHENS TO ATHENS
JUL 21	7	ATHENS TO VENICE

DATE	NIGHTS	ITINERARY
AUG 7	7	ROME TO NICE
AUG 14	7	NICE TO ROME
AUG 31	7	ROME TO VALLETTA
SEP 7	8	VALLETTA TO ATHENS
SEP 20	11	ATHENS TO ATHENS
OCT 1	9	ATHENS TO VALLETTA
OCT 10	7	VALLETTA TO NICE
OCT 17	7	NICE TO BARCELONA
OCT 24	10	BARCELONA TO TENERIFE
NOV 3	11	TENERIFE TO BARBADOS

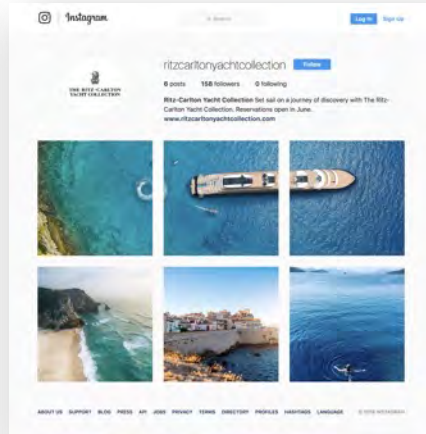
# FOLLOW US ON SOCIAL



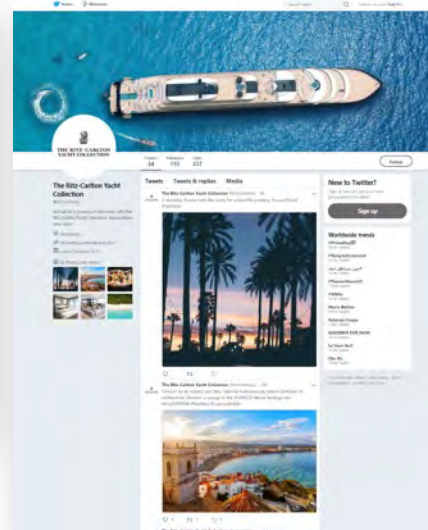
@ritzcarltonyachtcollection



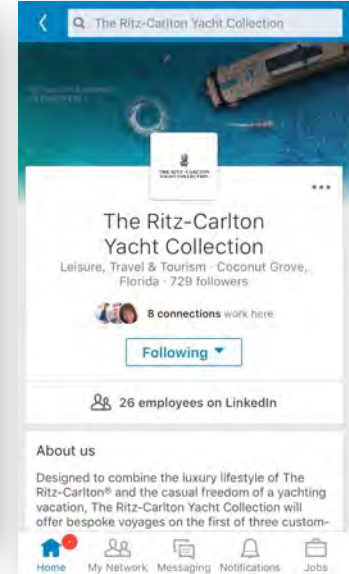
@ritzcarltonyachtcollection



@ritzcarltonyc



The Ritz-Carlton Yacht Collection



WHAT'S NEW

# POSITIVE GUEST FEEDBACK



*"Staff was warm, friendly and cared a great deal about making this a great experience for us."*

*"Evrima is a beautiful ship inside and out. Our room was excellent and thoughtfully designed with beautiful finishes."*

*"The service personnel were outstanding. Always with a smile, a greeting and a willingness to help. It was really cool to be on the inaugural voyage of the Evrima."*

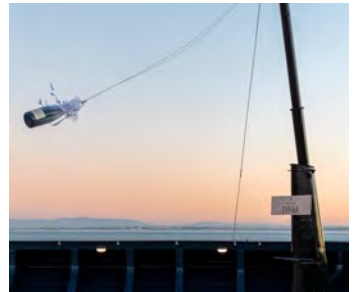
*"We thought the food and service was excellent"*

*"Overall, our experience was exceptional. The room product was spectacular, the public spaces beautiful! We made life-long friends with other guests, enjoyed the beauty of the ship and the ports, and made memories that will last forever. Our intent is to book again - perhaps, Greece to Rome."*

# CHRISTENING CEREMONY

## EVIRIMA CHRISTENED IN LISBON

- On November 5th, we celebrated the Christening Ceremony of *Evrima*, at the Lisbon Cruise Terminal in Lisbon, Portugal.
- Commemorating this milestone in accordance with longstanding maritime tradition, the Christening Ceremony marks a significant moment in the launch of a new vessel, where after a ceremonial blessing, a bottle of champagne is broken against the bow to bring good luck throughout the yacht's travels.



# INTRODUCING THE NEXT GENERATION



Two new superyachts setting sail in 2024 and 2025

## *Ilma*

Origin: Maltese

Meaning: Water

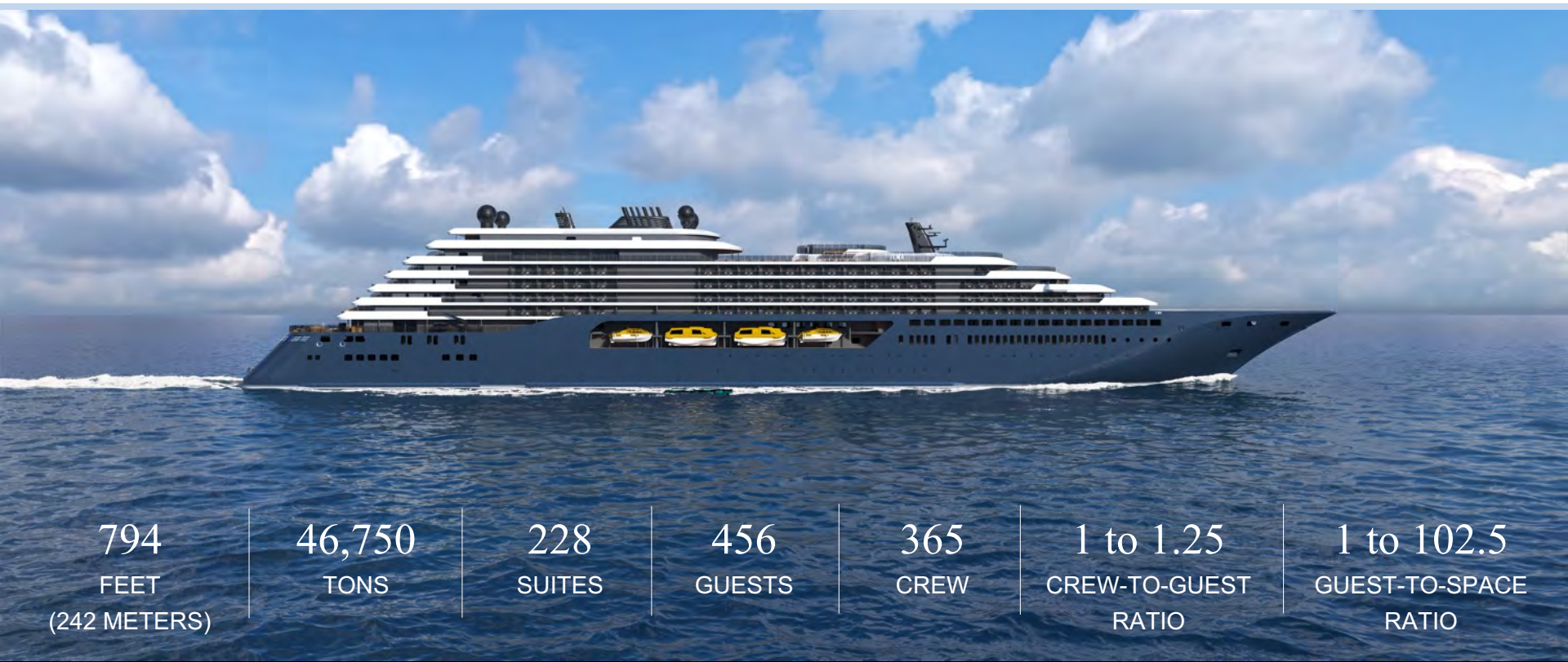
## *Luminara*

Origin: Spanish

Meaning: Child of the stars

Signature spaces include multiple dining experiences, a wine vault, a Ritz-Carlton Spa and an expanded marina with direct access to the sea. With an enhanced focus on sustainability, the superyachts will be designed with advanced environmental features and technologies to minimize ecological impact.

# ILMA BY THE NUMBERS



794  
FEET  
(242 METERS)

46,750  
TONS

228  
SUITES

456  
GUESTS

365  
CREW

1 to 1.25  
CREW-TO-GUEST  
RATIO

1 to 102.5  
GUEST-TO-SPACE  
RATIO

# ILMA STEEL CUTTING



July 13, 2022, the steel-cutting ceremony was held for our second yacht, Ilma, at Chantiers de l'Atlantique in Saint-Nazaire, France.

This maritime tradition, wherein the ship's first piece of steel is cut marks the official start of construction and the beginning of the next generation of superyachts for The Ritz-Carlton Yacht Collection.



THANK YOU